



/THE HOUSE OF THE BEAMS /APARTMENT
WARSAW CITY CENTER /EROSION APART-
MENT RENOVATION IN ATHENS /SMOLENKA
OAK TUBE APARTMENT /PRIVATE RESI-
DENCE IN MONACO /MODERN FLAT IN ROME
/THE BRICK LOFT /PENTHOUSE IN ST.
PETERSBURG BREKKIJSKONGIJR COTTAGES
/BOUNDARY HOUSE /FOUR HOUSE /SKY-
WARD HOUSE /HOUSE IN KYOBATE
/4X30 HOUSE /HOUSE IN HIYOSHI /NN
HOUSE /G HOUSE /VILLA SSK /ENGELAND
RESIDENCE /HOUSE IN YORO /CASA
SAKANUIE /HOUSE OF IZUISAN /BOOK
TOWER HOUSE /NEJT /CASA PILS /
HOUSE IN SHIMODA-CHOI /WFH HOUSE /T
HOUSE /SLIP HOUSE /GROW /HOUSE
MADRID /X HOUSE /BREEZE /OLS HOUSE
/TWO SINGLE-OCCUPANCY DETACHED
HOUSES /GREEN GREENBERG GREEN
HOUSE /HOUSE M /HOUSE NAVARRA /NIZ
HOUSE /HOUSE 04 /VMVK /AN ASSEM-
BLAGE OF MICROHOMES /HOUSE OF SILENCE
/ABBOTS WAY /HOUSE N /SEAVIEW HOUSE



HOUSE DESIGN
LATEST·LIVE·LAND·FOR PEOPLE

3

A&C



LATEST·LIVE·LAND·FOR PEOPLE



HOUSE DESIGN 3

/APARTMENT HOUSE & LOFT /COMPACT HOUSE
/MID-SIZED HOUSE /LARGE-SIZED HOUSE

House Madrid

{ **Design** Andrea Spada, Michele Corbani / ILMODESIGN
Location Madrid, Spain **Total area** 250m² **Completion**
2011 **Photos offer** ILMODESIGN }

{ The main focus was to find the right formula to coexist all works of art acquired. The designer devised a central space, which was the hub of the house. And all of the rooms were based on it. This space without wall creates a synergy, a visual communication with other areas of the house, being the core of all communications. The second question to be solved was to integrate this space with the rest of the house, it creates a feeling that could distinguish day and night. The designer proposed spatial continuity through the ceiling. Thanks to a series of cuts as a hole surrounding, the house from the entrance generates a sense of architectural purity enhanced, creates a connectedness between the different spaces inviting the users to discover them. It makes an outline of whole ideas that talk to each other and a series of soft curved lines that help make a soothing sensation. Each space emphasizes their own uniqueness, but overall it looks as if a harmonious painting. }

Text by ILMODESIGN

Andrea Spada graduated in Industrial Design at Politecnico University of Milan. After a short work experience in Milan, his career was developed in Spain where he worked in important studios of interior design and planning of the major fashion stores. He has dedicated himself to creativity and the artistic management of projects.

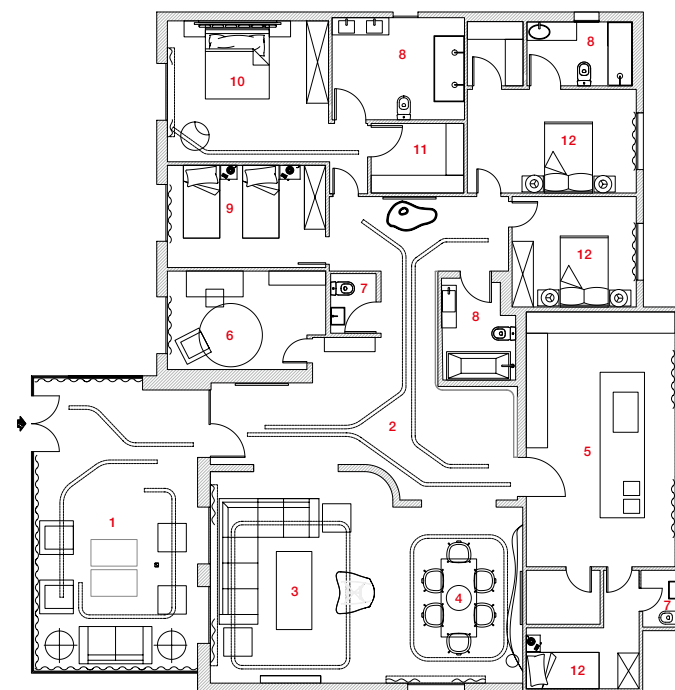
Michele Corbani graduated in Architecture at Politecnico University of Milan, in 2002 he won the International Competition of Ideas in Architecture for the restoration of the disused area of the underground station Ventas in Madrid. His career developed in Spain where he worked in prestigious architecture studios. He also worked on construction sites of different types of project, on a national and international level.







- 1 PORCH
- 2 HALL
- 3 LIVING ROOM
- 4 DINING ROOM
- 5 KITCHEN
- 6 HOME OFFICE
- 7 TOILET
- 8 BATHROOM
- 9 KID'S ROOM
- 10 MASTER BEDROOM
- 11 DRESS ROOM
- 12 BEDROOM



FLOOR PLAN



House navarra

{ **Design** Andrea Spada, Michele Corbani / ILMIODESIGN
Location Navarra, Spain **Total area** 300m² **Completion**
 2011 **Photos offer** ILMIODESIGN }



{ The designers proposed a modification comprehensive of interior architecture, which affects the spaces, decoration and common access, until the moment interconnected without much logic and with many corners. The living room is designed as a center with a large formal element that separates into two areas and also marked areas by the habits of the owners: entrance hall and visit area by the fireplace and direct access to the hall for a more intimate gathering. An exclusive element is the key of the space, the generator of the different relationships, as a large box made of molded plank with laser drilling square shapes. The kitchen with dining area and service area are united, creating a multifunctional large space which has sought an aseptic aesthetic like a large dining-social laboratory. The master room with the private lounge attached a bathroom and a dressing room. A large sliding door with organic wooden bookcase from floor to ceiling connects the bedroom and the lounge so the master bedroom is able to be disappeared completely and effectively united the lounge. Each space is the expression of the balanced composition of big furniture with the custom designed furniture, designed and developed specifically for daily needs and individual pleasures. }

Text by ILMIODESIGN

Andrea Spada graduated in Industrial Design at Politecnico University of Milan. After a short work experience in architecture in Milan, his career developed in Spain where he worked in important studios of interior design and on the planning of stores of the major fashion houses. He has mainly dedicated himself to creativity and to the artistic management of the project.

Michele Corbani graduated in Architecture at Politecnico University of Milan, in 2002 he won the International Competition of Ideas in Architecture for the restoration of the disused area of the underground station Ventas in Madrid. His career developed in Spain where he worked in prestigious architecture studios. In this last job he has been the maximum project manager and organizer of the office activities for 6 years. He also worked on construction sites of different types of project, on a national and international level.

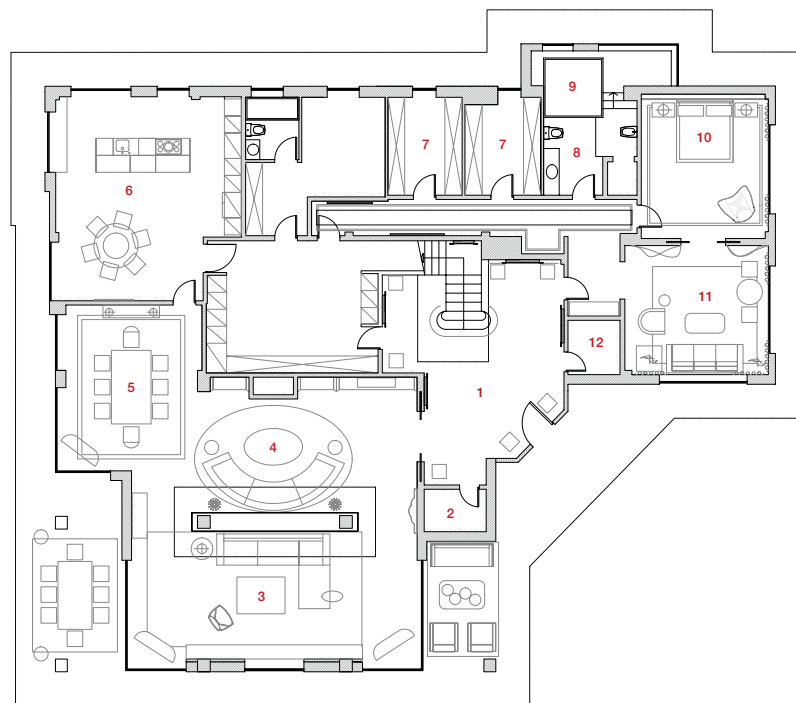








- | | | | |
|-----------------|---------------|-------------------|-------------------|
| 1 ENTRANCE HALL | 4 LIVING ROOM | 7 DRESSING ROOM | 10 MASTER BEDROOM |
| 2 CLOAKROOM | 5 DINING ROOM | 8 MASTER BATHROOM | 11 LOUNGE |
| 3 VISIT AREA | 6 KITCHEN | 9 JACUZZI | 12 TOILET |



FLOOR PLAN

